

ASTM D 97 - D 2500 - ISO 3015 & ISO 3016 - IP 15 & IP 219

SCOPE

Standard Test Method for Pour Point of Petroleum Products

**FULLY AUTOMATED CLOUD AND POUR POINT TESTER
- MODEL NTE 450 -**

- REF 60300 -

MAIN CHARACTERISTICS

- ✓ Mimics the standard methods
- ✓ Detection by specific optical fibre for CLOUD Point
- ✓ Detection by ultra sonic sensor for POUR Point
- ✓ Visualisation of the different cooling steps – detection every 3°C or every 1°C
- ✓ Programmable cooling slope
- ✓ Quick coupling on measuring head
- ✓ Stand alone
- ✓ Easy access to maintenance parameters by software
- ✓ Easy access to hardware maintenance
- ✓ Computer interface through a user friendly software accessible by touch screen
- ✓ Storage of 200 results in stand alone

SCOPE OF DELIVERY

NTE 450 CPP delivered ready for use with :

REF 40386	Printer
REF 21146	Could point tubes
REF 21147	Pour point tubes
REF 60310	Stainless steel probe for Pour Point
REF 60311	Stainless steel probe for Cloud Point
REF 60312	Optical Fibre for Cloud point detection
REF 60313	Ultra sonic sensor for Pour Point detection
REF 60209	Stylet for touchscreen

NECESSARY ACCESSORY

REF 23205 Cryostat TLC 80 11 litres (-80°C / +20°C)

OPTION

REF 60202 Connexion for 2 equipments on one cryostat

CONSUMMABLES

REF 21146	Test tube for Pour Point
REF 21147	Test tube with glass mirror for Cloud and Pour Point
REF 21150	Test tube with platinum mirror for Cloud and Pour Point

REFERENCE FLUIDS

REF 60002	Cloud point (diesel)
REF 60003	Pour point (diesel)

CONTACT : sales@normalab.com

NORMALAB FRANCE SAS
ZA Caux Multipôles 1 - F-76 190 Valliquerville
Tel. : +33 232 700 100
Fax : +33 232 704 732

www.normalab.com
NTE 450 Leaflet 14rev2



ZOOM on Detection Head

ORDERING INFORMATION

REF 60300

NTE 450 CPP For use on AC 230V – 50/60Hz

REF 60301 NTE 450 PP For determination of
POUR POINT only / 115V – 50/60Hz

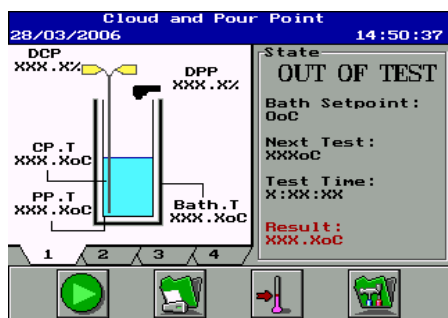
REF 60302 NTE 450 CP For determination of
CLOUD POINT only / 115 – 50/60Hz

(W) 270x (D) 500x (H) 600 mm (+/- 25kg)

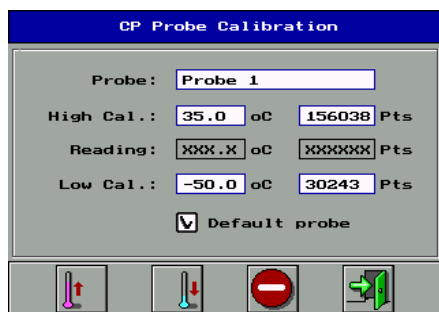
DISTRIBUTED BY

G-Labo Germany
Bgm.-Horneffstr.26
69509 Mörlenbach
Tel.: + 49 6209 797100
Fax: + 49 6209 797101
Mail: info@g-labo.de
Web: www.g-labo.de

HIGHLY COMPREHENSIVE SOFTWARE



MAIN MENU

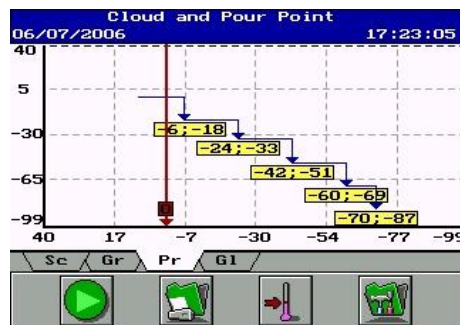


PROBE CALIBRATION

TECHNICAL SPECIFICATIONS

GENERAL

- ✓ Visualisation of the detection level
- ✓ Adjustable bath temperature at stand by position
- ✓ Pt 100 sample temperature
- ✓ Jacket temperature
- ✓ Visualisation of the cooling levels
- ✓ Apparatus and sensors status
- ✓ Easy access to the service parameters
- ✓ Storage of the 200 last tests results
- ✓ Sample identification
- ✓ Operator's name
- ✓ Maintenance and calibration protected by password
- ✓ Programme files: 15 (5 standards and 10 parametrable)



COOLING STEPS GRAPH

- ↳ Quick and easy to master
- ↳ Simple icons
- ↳ Intuitive software
- ↳ Direct access by shortcuts
- ↳ QUICK TEST LAUNCH available
- ↳ Fresh design

POUR POINT

- ✓ Detection by ultrasonic sensor
- ✓ Temperature range from -75°C to 51°C (Lowest temperature depends on the cryostat type)
- ✓ Temperature measurement resolution : 1°C
- ✓ Tilting intervals : every 3°C or 1°C (configurable)

CLOUD POINT

- ✓ Detection by optical fibre
- ✓ Intervals of 1°C
- ✓ Temperature measurement resolution : 0,1°C
- ✓ Temperature range from -75°C to 49°C (Lowest temperature depends on the cryostat type)

CONTACT : sales@normalab.com

NORMALAB FRANCE SAS
ZA Caux Multipôles 1 - F-76 190 Valliquerville
Tel. : +33 232 700 100
Fax : +33 232 704 732

www.normalab.com
NTE 450 Leaflet 14rev2

DISTRIBUTED BY

G-Labo Germany
Bgm.-Horneffstr.26
69509 Mörlenbach
Tel.: + 49 6209 797100
Fax: + 49 6209 797101
Mail: info@g-labo.de
Web: www.g-labo.de