

ASTM D 5 - ISO EN 1426 - IP 49 - DIN 52010 & D 217 - ISO 2137 - IP 50 - DIN 51580 & D 937 - IP 179 - DIN 51579 & D 1321 - ISO 3992 - DIN 51579 & D 1403- ISO 6298 - IP 310

SCOPE

This test method covers determination of the penetration of semi-solid and solid bituminous materials.

FULLY AUTOMATIC MODEL OF PENETRATION VALUE DETERMINATION
- **NPN TECH MODEL** -
- **REF 942734** -

MAIN CHARACTERISTICS

- Built-in software
- Full auto approach on conductive products & hard bitumen (in option)
- 4 programmable reference positions for cone holder assy
- Stepper motor for penetration depth as low as 0.01 mm
- Programmable Penetration time between 0 and 999 min
- Range : 0 to 75 mm
- Results : in 1/10 mm on full range

SCOPE OF DELIVERY

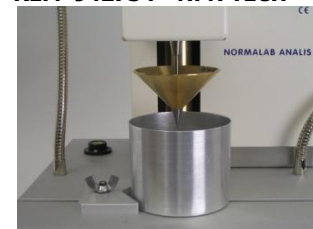
Holder for accessories, magnifying lens and low voltage illuminator, centering guide with screw and nut, power cord, set of 2 fusibles, RS232C output, accessories for automatic level detection for conductive sample comprising probe cable, mini grip & test probe and instruction manual.

ADDITIONAL ACCESSORIES AND OPTIONS

REF 9417341	Light bulb for ref. 941734
REF 9417342	Flexible light for ref.941734
REF 9417343	Magnifying glass for ref. 941734
REF 4873465	CD-rom with PC application + USB cable - for NPN TECH
REF 0195200004	Transfer bath, made of stainless steel with coil To be connected to a water bath
REF 0195200005	Transfer bath support made of stainless steel
REF 22246	Cryostat -30...+150°C : 0,03°C, with depth of 200mm
REF 941732	Calibration kit for automatic penetrometer
REF 9417371	Bitumen automatic level detection device
REF 11504	ASTM thermometer (17 C), + 19 to 27°C
REF 11532	ASTM thermometer (63 C), - 8to + 32°C
REF 11533	ASTM thermometer (64 C), +25 to + 65°C



REF. 942734 - NPN TECH



GREASE MODE



REF 941736

CONTACT : sales@normalab.com

NORMALAB FRANCE SAS
ZA Caux Multipôles 1 - F-76 190 Valliquerville
Tel. : +33 232 700 100
Fax : +33 232 704 732

www.normalab.com

NPN TECH leaflet 15

DISTRIBUTED BY

G-Labo Germany
Bgm.-Horneffstr.26
69509 Mörlenbach
Tel.: + 49 6209 797100
Fax: + 49 6209 797101
Mail: info@g-labo.de
Web: www.g-labo.de

ACCESSORIES AND CONSUMABLES for Bitumen (ASTM D5)

- REF 518063** Standard needle 2.5 g (up to 350 units)
REF 941737 Needle holder 47.5 g (1 supplier with main equipment)
REF 941810 Outfit for penetration of bituminous material, comprising: needle, holder, 50 g weight and 2 containers
REF 941812 Additional weight 100 g
REF 941815 Additional weight 50 g
REF 9418140 Long needle 2.5 g (up to 500 units)
REF 21712 Pack of 300 Sample containers only one use, 55x35 mm
REF 518066 Aluminium container, 55 X 35 mm,
REF 9418181 Aluminium container, 55x70 mm (>200 units)
REF 9418191 Aluminium container, 55x57 mm (up to 500 units)
REF 21932 Standard needle 2.5 g (up to 350 units) with UKAS Certificate



REF 941736

ACCESSORIES (for lubricating greases - ASTM D 217)

- REF 941739** Grease cutter with blade
REF 941736 Outfit for consistency of lubricating grease comprising : 1 cone 102.5 g, 1 holder and 1 container 76x63 mm
REF 941737 Cone holder , nickel-plated brass, movable, 47.5 g
REF 941738 Standard cone 102.5 g
REF 9417411 Sample container, 76x63 mm
REF 27322 Spatula 30x200 mm
REF 9417582 Normalab production - GWM CLASSIC- Compact twin-unit automatic grease worker - using electronic counter to control the strokes number. Delivered in standard with 2 plunger plates 51 holes + 2 covers + 2 Shaft and Handle + 2 Vent Cocks.
 For use on AC 400 V, three-phase, 50 Hz, 16 A, 400x260x500 mm (±29 kg)



REF 941811

ACCESSORIES (for consistency of petroleum - ASTM D 937)

- REF 941735** Outfit for consistency of petroleum, comprising : cone, container and holder
REF 941737 Cone holder , nickel-plated brass, movable, 47.5 g
REF 941738 Standard cone 102.5 g
REF 9417412 Sample container 100 x 65 mm with cover
REF 518063 Standard needle 2.5 g (up to 350 units)
REF 518081 Needle with shoulder 2.5 g, stainless steel

ACCESSORIES (for consistency of petroleum waxes - ASTM D 1321)

- REF 941811** Outfit for consistency of petroleum waxes comprising : shouldered needle, container, weight &
REF 941816 Needle with shoulder 2.5 g, stainless steel
REF 941737 Cone holder, nickel-plated brass, movable, 47.5 g holder
REF 941815 Additional weight 50 g
REF 941820 Sample container with base plate
REF 21932 Needle 2,5g with certificate



REF 9417582

ACCESSORIES (Penetration tests using one-quarter or one-half scale cone equipment - ASTM D 1403)

- REF 941742** 1/4 scale cone (9.38 g)
REF 941743 1/2 scale cone (37.5 g)
REF 27322 Spatula 30 x 200 mm
REF 9417421 1/4 scale grease worker (manual operation)
REF 9417431 1/2 scale grease worker (manual operation)

ORDERING INFORMATION

- REF 942734**
 NPN TECH For use on AC 230 V, 50 Hz - 1 A
 (W) 260x (D) 320x(H) 540 mm (± 23 kg)

CONTACT : sales@normalab.com

NORMALAB FRANCE SAS
 ZA Caux Multipôles 1 - F-76 190 Valliquerville
 Tel. : +33 232 700 100
 Fax : +33 232 704 732

www.normalab.com

NPN TECH leaflet 15

DISTRIBUTED BY

G-Labo Germany
 Bgm.-Horneffstr.26
 69509 Mörtenbach
 Tel.: + 49 6209 797100
 Fax: + 49 6209 797101
 Mail: info@g-labo.de
 Web: www.g-labo.de